

# Factors Impacting Wait Times for a Deceased Donor Kidney Transplant

There are four major factors that impact wait times for a deceased donor kidney transplant.

## Blood Type

There are four blood types: O, A, B and AB. All people are compatible with their own blood type, and possibly with others. Patients must have a compatible blood type with their deceased kidney donor to prevent organ rejection.

How long a patient waits will depend on the number of compatible kidneys that are available for transplant.

## Allocation Points

Allocation points are calculated for every patient on the waiting list and are based on the amount of time on dialysis and cPRA score:

$$\text{Allocation Points} = 0.1 \text{ point per 30 days on dialysis} + [(cPRA/100) \times 4]$$

Patients are arranged on the waiting list by their total allocation points.

## Calculated Panel Reactive Antibodies

Calculated panel reactive antibodies (cPRA) is a score between 0% and 100% that estimates the percentage of kidney donors that a patient may be incompatible with.

- cPRA is measured by a blood test every 3 months, and
- Can change over time from pregnancy, blood transfusions, or other major health events.

Patients with high cPRA scores may have to wait longer to find a donor that is a suitable match.

## Extended Criteria Donors

Kidneys from Extended Criteria Donors (ECD) are suitable for transplant but may not last as long as a kidney from a younger, healthier donor. Patients can choose to receive an ECD kidney if they are:

- Over the age of 60;
- Over the age of 50 with diabetes; or
- Approved as a suitable candidate by their transplant doctor.

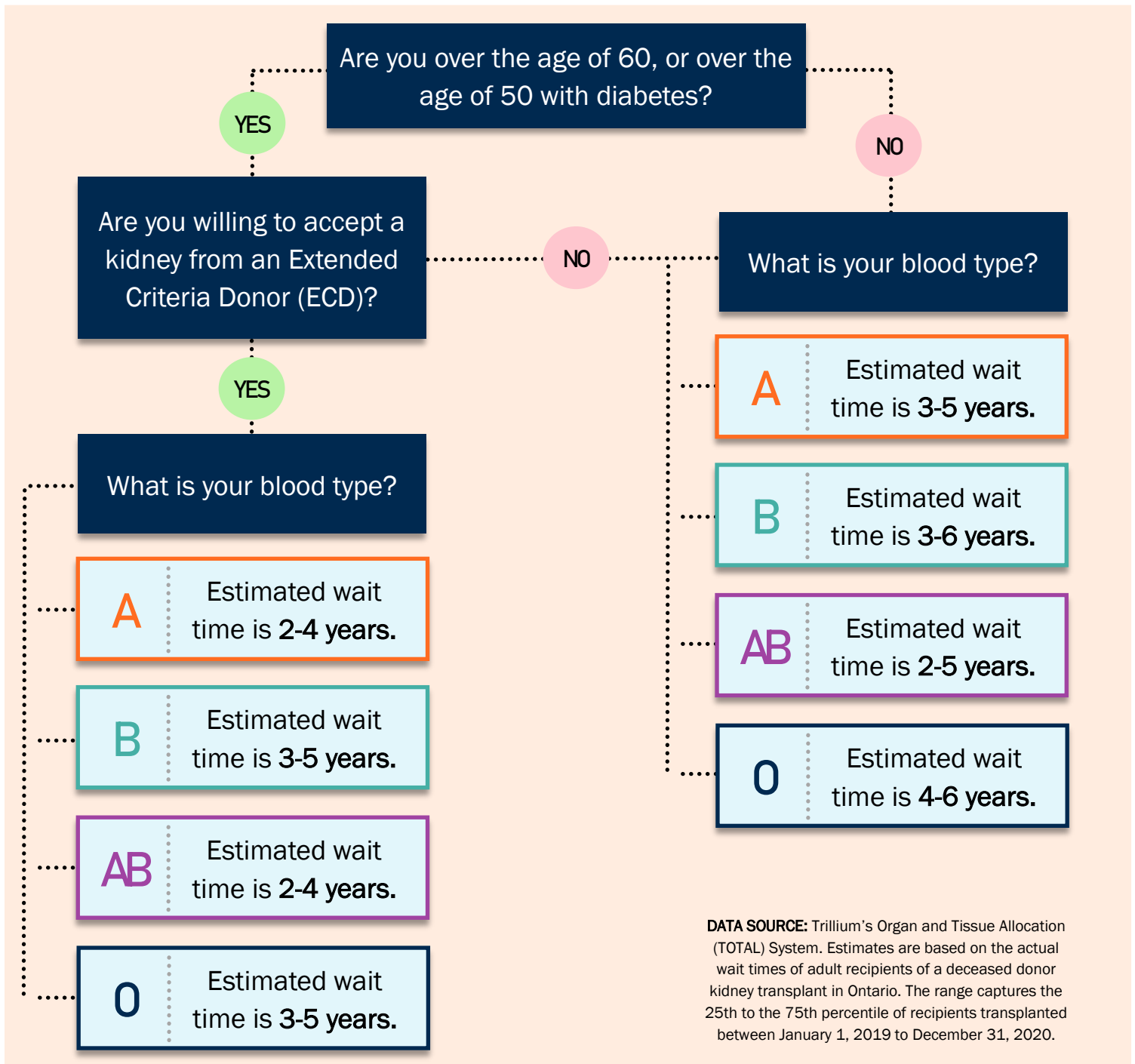
Patients who receive a kidney from an Extended Criteria Donor typically have shorter wait times.

Find out more at [giftoflife.on.ca](http://giftoflife.on.ca)



# Estimating Wait Time for a Deceased Donor Kidney Transplant

Wait time is counted from the day a patient begins dialysis to the day they receive their kidney transplant. While it is impossible to predict exactly how long a patient will have to wait, looking at the wait times of previously transplanted patients can provide helpful estimates. Use this tool to estimate how long you may wait for a kidney transplant.



**DATA SOURCE:** Trillium's Organ and Tissue Allocation (TOTAL) System. Estimates are based on the actual wait times of adult recipients of a deceased donor kidney transplant in Ontario. The range captures the 25th to the 75th percentile of recipients transplanted between January 1, 2019 to December 31, 2020.

Find out more at [giftoflife.on.ca](http://giftoflife.on.ca)

